

Info



Thank you for showing an interest in Growing Wild Outdoor Nursery. Here is some information about the childcare we offer.

Our ethos

To give children the time, space and freedom to learn naturally and enjoy the outdoors.

Our Vision

We want children to learn in their own way, at their own pace. We will provide a safe and stimulating environment where adults will inspire and enable children to be healthy, happy and capable individuals, who care for each other and their world.

Lindsey Bielby



I have over 20 years of working outside with children and young people, for the last 12 years I have ran my own business Growing wild delivering forest school programmes, woodland birthday parties, woodland toddler groups and other projects that mean children can access and enjoy the great outdoors.

As well as this I have my level 3 in Early years childcare and have worked part time for a fully outdoors kindergarten in Sheffield for the past 3 years. I strongly believe the outdoors is where children learn and develop best.

Janet Packer



I have over 20 years' experience in the early years sector, including primary teacher, Forest Schools practitioner, lecturer, consultant and nursery manager. I believe strongly in the value of nature and outdoor play in young children's learning. It has always been my ambition to open an outdoor nursery and I am so excited to be opening Growing Wild in the autumn.

How to find us

We have a beautiful countryside location, on Wigfield Farm in Barnsley; you will find us at the far end of the car park. Two large poly-tunnel provides shelter, lighting and warmth on the colder days, but the children will spend the majority of their time outdoors in the enclosed gardens and field. We have access to the farm and are in walking distance Worsbrough Country Park.



Haverlands Lane, Worsbrough, Barnsley, S70 5NQ

We will be in touch regarding open days and nursery visits as soon as possible.

Where learning comes naturally

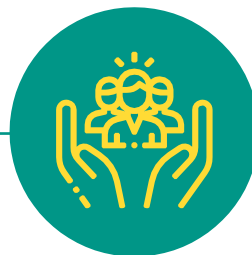
Info



We offer full days childcare only, Monday to Thursday 8am to 4.30pm we do ask that you book your child in for a minimum of two days per week. This enables your child to settle in effectively and gain full benefit from our provision.



Our rates



Funded places

£52 — Daily rate for 2 year olds

£48 — Daily rate for 3-5 year olds

We offer government funded places - both 15 and 30 hours for 3-5 year olds, depending on your circumstances and 15 hours for 2 year olds, where applicable.

A voluntary contribution of £13 is asked for per child per day if taking funded hours. This is to cover the cost of extra staffing in an outdoor setting. We have ratios of 1:6 rather than 1:8 or 1:13 to enable greater safety and allow more freedom and one-to-one interaction with your child.

A deposit of £50 will be required to secure your place. This will be refunded/taken off your monthly payments.

We are closed for 2 weeks at Christmas and 1 week in the summer (for staff training) to be arranged.

Breakfast Club -
£7
8am – 9am



We are a **fully inclusive setting** and will be happy to discuss any **special requirements** that your child may have with regards to their **physical or learning needs, dietary requirements, allergies, potty training etc.**

We very much look forward to welcoming you and your child to **Growing Wild Outdoor Nursery**. Please don't hesitate to contact us if you have any further questions, at:

enquiries@growingwildoutdoornursery.co.uk | 07852660144

Where learning comes naturally